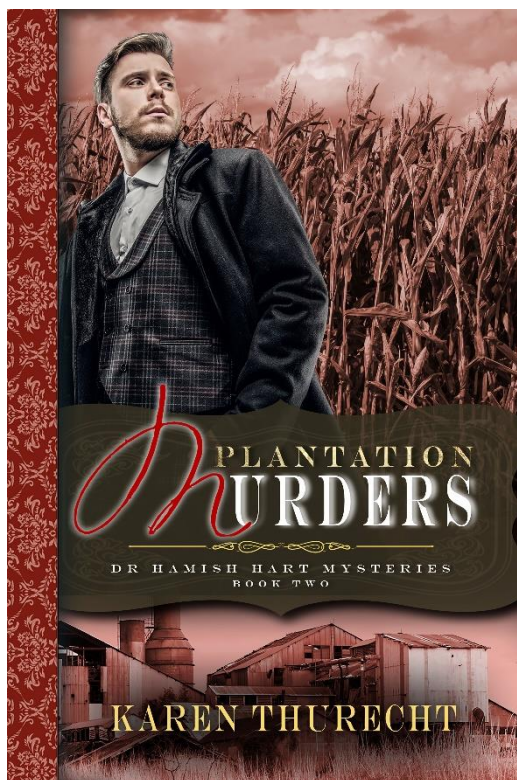


PLANTATION MURDERS

KAREN THURECHT



WHEN ANOTHER SUSPICIOUS MURDER TAKES PLACE, HAMISH IS IN A RACE AGAINST TIME TO IDENTIFY THE KILLER...

It's 1885 and a South Sea Island labourer, Kaelo, is the primary suspect in the murder of a Logan sugar plantation manager and the citizens of Brisbane are outraged, and none want to know when Dr Hamish Hart discovers that Kaelo could not have been responsible for the manager's death. Public sentiment is running high against political turmoil and the citizens are looking for a scapegoat.

Driven by his commitment to social justice, Hamish is convinced the answer to the mystery lies within the fraught relationships between the members of the Daniels family who own the Cloverton Plantation. It is when another suspicious murder occurs, and a crazed mob attempt to lynch the terrified Kaelo, that Hamish realises he is in a race against time to unravel the family's dark secrets and to identify the killer before anyone else dies at the hand of a murderer...

Love the Series so far? Keep an eye out for the next exciting mystery to come for Dr Hamish Hart in Murder in Frog's Hollow.

"Karen Thurecht has done it again with a captivating and engrossing mystery set in a detailed period of Australian history and culture...her attention to detail and thought-provoking characters blended with her tapestry of plot is exceptional...brilliant..." Thomas, Indiebook reviewer

| | |
|------------------|------------------|
| ISBN | 9781922594693 |
| Publication Date | MAR 1 2022 |
| Genre | Fiction, Mystery |
| Format | Paperback |
| Audience | General |
| Location | Dunwich, QLD |

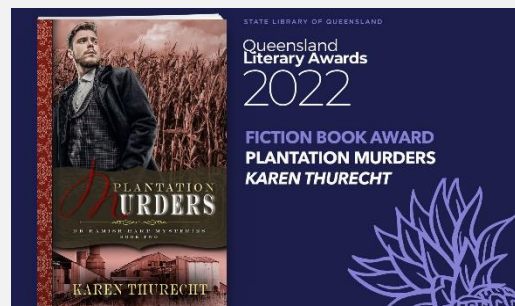
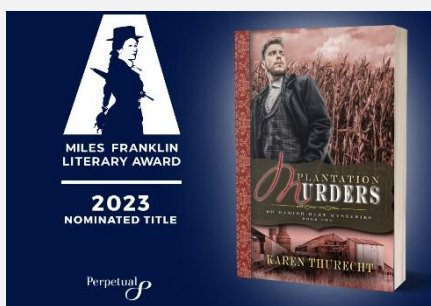
Price available on our site

AUTHOR BIO

Dr Karen Thurecht has a PhD in medical anthropology and a lifelong interest in cultural belief systems relating to health and medicine. Karen has taught cultural history at the University of Queensland Medical School and the Griffith University Medical School, and supervised Masters and PhD students in Public Health across the country. Karen has previously published two non-fiction books, one relating to women's health and the other about our need to understand our lives through story. Karen lives on North Stradbroke Island with her husband and is working on a murder mystery series set in Queensland in the 1880's, involving an eager young doctor, Hamish Hart.



AWARD NOMINATIONS



www.shawlinepublishing.com.au



Publisher contact: Bradley Shaw

Email: orders@shawlinepublishing.com.au

For further great titles by new Australian authors, please visit our website.

For exclusive Trade pricing and deals, please contact us to set up an account.

For international buyers, please visit our website for a link to Amazon.

PLANTATION MURDERS

KAREN THURECHT

A CONVERSATION WITH THE AUTHOR

WHY DID YOU WRITE THE 'DR HAMISH HART MURDER MYSTERIES' SERIES? WHAT WERE YOUR INSPIRATIONS?

My concept for the series is that each book will focus on a location and an element of social/cultural inequity.

In the second book, 'Plantation Murders', the focus is on the South Sea Islander Labourers who were brought to Queensland to work in the cotton and sugar industries between 1864 and 1904. I have a passionate interest in decolonising Australia's history and bringing past injustices into the light in story form.

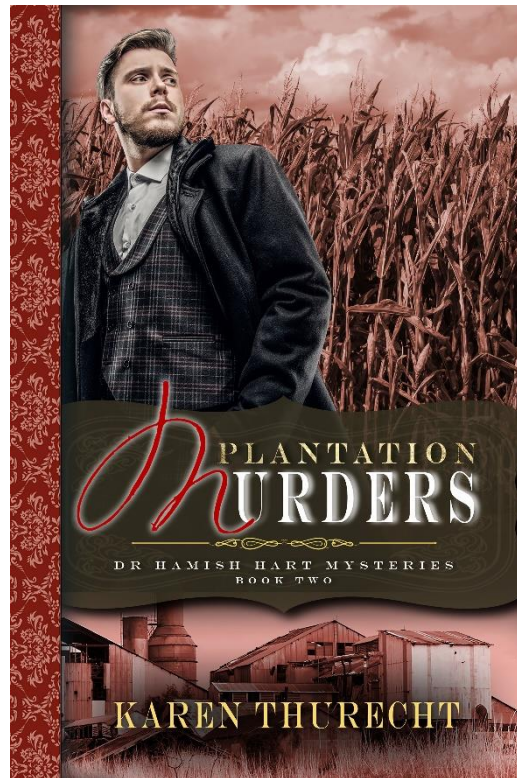
The cosy murder mystery is a less confronting medium than others and offers the opportunity to present a narrative that enlightens as it entertains. Besides, I love a murder mystery.

HOW HAD YOU DECIDED ON THE BEST CHARACTERS FOR THE BOOK?

My characters tend to evolve with the setting and the cultural/historical theme. They appear and start playing with me. Once they take shape, they are with me forever. Characters from previous books are like work friends I may have temporarily lost touch with, but they are still out there getting on with their lives and I think about them a lot.

HOW DO YOU CREATE OR MODEL YOUR CHARACTERS TO FIT THE REQUIREMENTS OF THE STORY AND THE EXPECTATIONS OF THE READERS?

I don't think about the expectations of readers prior to writing the book. I certainly listen to feedback from beta readers once I have a draft. As to the first part of the question, I usually begin with the characters, and they drive the story – not the other way around.

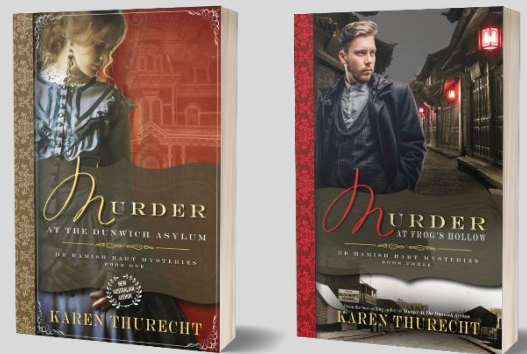


| | |
|------------------|------------------|
| ISBN | 9781922594693 |
| Publication Date | MAR 1 2022 |
| Genre | Fiction, Mystery |
| Format | Paperback |
| Audience | General |
| Location | Dunwich, QLD |

Price available on our site

Also in the
**DR HAMISH HART
MYSTERIES
SERIES**

Available online



www.shawlinepublishing.com.au

SLP
**SHAWLINE
PUBLISHING
GROUP**

Publisher contact: Bradley Shaw
Email: orders@shawlinepublishing.com.au

For further great titles by new Australian authors, please visit our website.

For exclusive Trade pricing and deals, please contact us to set up an account.

For international buyers, please visit our website for a link to Amazon.